

SECURECHOICE SPIDER ASSURANCE PROGRAM

With the proven performance of Demon® WP, Demand® CS and Tandem® insecticides, Syngenta is committed to providing products with effective performance against spiders. By following the treatment protocol specified, Pest Management Professionals (PMPs) can help reduce spider populations around customers' homes or properties.

Assurance Offer: If applications of Demon WP and Demand CS, or Demon WP and Tandem, fail to provide adequate reduction of spider populations during the specified treatment period, Syngenta will provide the appropriate quantity of Demon WP, Demand CS and/or Tandem to cover the retreatment(s) as described in this SecureChoiceSM Spider Assurance Program.

To qualify for the SecureChoice Spider Assurance Program, Demon WP and Demand CS or Tandem must be applied according to the treatment protocol.

Program Details

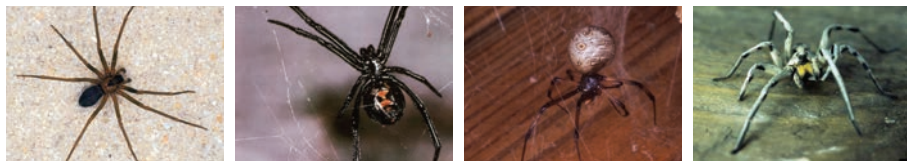
Follow the treatment protocol below per account.

Product(s)	% of Active Ingredient (AI) in Formulation	Concentration	Application Rate	AI
Demon® WP insecticide	40.0 WP	0.2%	2 packets/gal.	Cypermethrin
Demand® CS insecticide	9.7 CS	0.03-0.06%	0.4-0.8 fl. oz./gal.	Lambda-cyhalothrin
Tandem® insecticide	3.5 and 11.6 ZC	0.065-0.13%	0.55 fl.oz./gal.-1.1 fl.oz./gal.	Lambda-cyhalothrin and thiamethoxam

  @SyngentaPest

 **SecureChoiceSM**
Spider assurance





Brown recluse spider¹

Black widow spider²

Brown widow spider³

Giant wolf spider⁴

Treatment Protocol for Spiders

Application using backpack, hand pump or power sprayer:

- ▶ Before treating, use a small broom (e.g., a Webster® brand broom), vacuum or similar device to remove spider webs.
- ▶ Make spot treatments in spider web locations and the adjacent areas with Demon WP at 0.66 oz. (2 packets)/gal.
- ▶ Inspect after 7-14 days and, if necessary, treat with Demand CS at 0.8 fl. oz./gal. or Tandem at 1.1 fl. oz./gal.
- ▶ Once every 60-90 days, remove webs with a broom as necessary and retreat with Demand CS at 0.4 fl. oz./gal. or Tandem at 0.55 fl. oz./gal. for residual spider control.
- ▶ Treat areas where spiders have built or are likely to build webs, such as under eaves and in building corners.
- ▶ Use spot, crack-and-crevice and void treatments for areas under eaves, around entryways and windows, and landscape plants near the structure.

Other Information

- ▶ For enhanced results, consider general perimeter treatments to reduce populations of insect prey for spiders.
- ▶ Physically removing spider webs before applying an insecticide helps ensure the spider will come in contact with the insecticide residues.
- ▶ When treating mulch, ground cover or heavy vegetation, apply enough volume to provide complete coverage of the treated area.
- ▶ When selecting an insecticide for spider control jobs, keep in mind some treatments will not provide effective residual control on porous surfaces. Microencapsulated and wettable powder formulations of pyrethroid insecticides like Demand CS, Tandem and Demon WP stay on top of porous surfaces and adhere well to spiders' legs.

¹"Brown recluse spider (*Loxosceles reclusa*)" by Florida Division of Plant Industry, Florida Department of Agriculture and Consumer Services, Bugwood.org is licensed under CC BY 3.0

²"Black widow spider (*Latrodectus mactans*)" by James Solomon, USDA Forest Service, Bugwood.org is licensed under CC BY 3.0

³"Brown widow spider (*Latrodectus geometricus*)" by Florida Division of Plant Industry, Florida Department of Agriculture and Consumer Services, Bugwood.org is licensed under CC BY 3.0

⁴"Giant wolf spider (*Hogna carolinensis*)" by Eugene E. Nelson, Bugwood.org is licensed under CC BY 3.0

Program Terms and Conditions

- ▶ PMP will follow all label guidelines, recommendations, use rates and treatment protocols as defined in the SecureChoice Spider Assurance Program.
- ▶ PMP will review all program materials with a Syngenta representative or authorized distributor representative prior to PMP enrollment in the SecureChoice Spider Assurance Program.
- ▶ PMP will agree to provide the following information in the event that a retreatment or retreatments are necessary:
 - ▶ The amount of finished gallons of product per treatment, per account
 - ▶ The approximate area treated (acres or sq. ft.) per treatment, per account
- ▶ PMP will agree to work closely with a Syngenta territory manager to perform the requirements in the SecureChoice Spider Assurance Program during the Program Period.
- ▶ Some homes or properties may not be ideal candidates for receiving spider treatments. Please consider this when discussing spider treatment options with customers in this situation.
- ▶ If PMP receives a complaint from an account that requires a retreatment within this SecureChoice Spider Assurance Program, despite following all label instructions and conditions within this SecureChoice Spider Assurance Program, PMP must contact a Syngenta territory manager within 7 days of the account being retreated.
- ▶ If Syngenta determines that the retreatment(s) is/are justified, Syngenta will provide the quantity of Demon WP, Demand CS and/or Tandem to cover the retreatment(s) of the account as needed. Syngenta will not pay for the application or other costs associated with retreatment(s).
- ▶ Syngenta reserves the right to investigate each product performance complaint, to verify all purchases or modify or discontinue this SecureChoice Spider Assurance Program at any time.



Visit [SyngentaPMP.com/Spider](https://www.SyngentaPMP.com/Spider)

FOR LIFE UNINTERRUPTED™