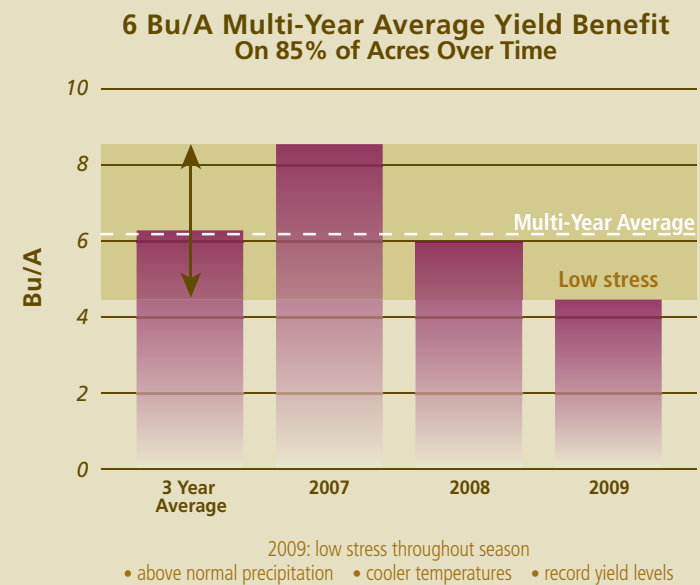


Avicta Complete Corn: 6 bu/a Multi-Year Average Yield Benefit on 85% of the Acres Over Time

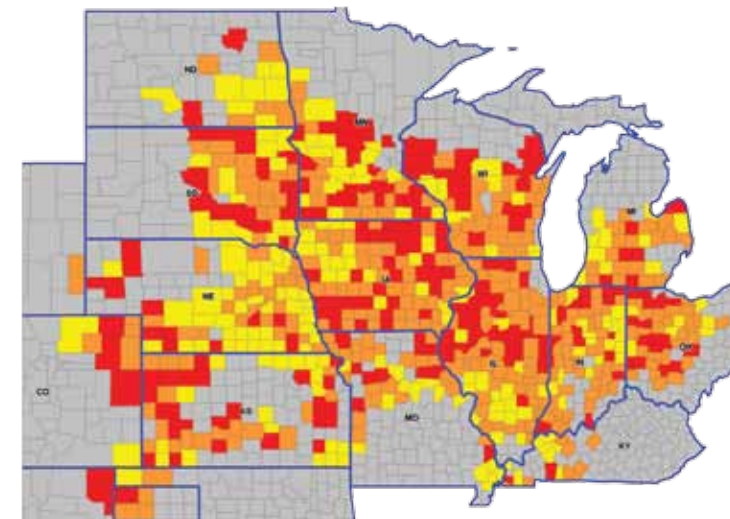
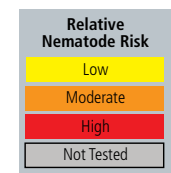
In 2007 growers experienced a typical season with stressful growing conditions, whereas 2009 was extremely cool with average precipitation in the Midwest and above average precipitation in the South. As illustrated in the chart, crops grown from Avicta Complete Corn in 2007 were protected and able to thrive despite the difficult conditions, resulting in an 8.5 bushel-per-acre average yield increase over Cruiser Extreme[®] 250 insecticide/fungicide combination.

In 2009, growers saw less of a yield benefit from Avicta Complete Corn due to a low stress level throughout the season caused by normal or above normal precipitation and cooler temperatures. Most growers had a successful season with higher-than-normal yields across the board due to a lack of heat and drought stress.



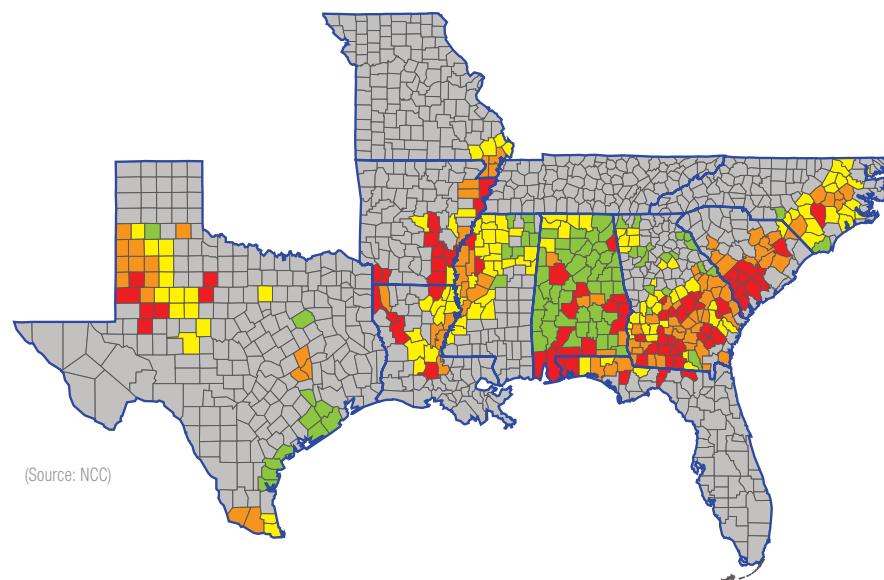
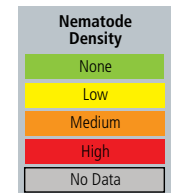
Average Corn Nematode Risk in the U.S. (MIDWEST)

The potential corn injury risk category colors represent a weighted index of nematodes present based on species numbers and relative thresholds for each species.



©2008, Syngenta Crop Protection, Inc., Greensboro, NC.

Root-Knot Nematode Distribution in the U.S. (SOUTH)

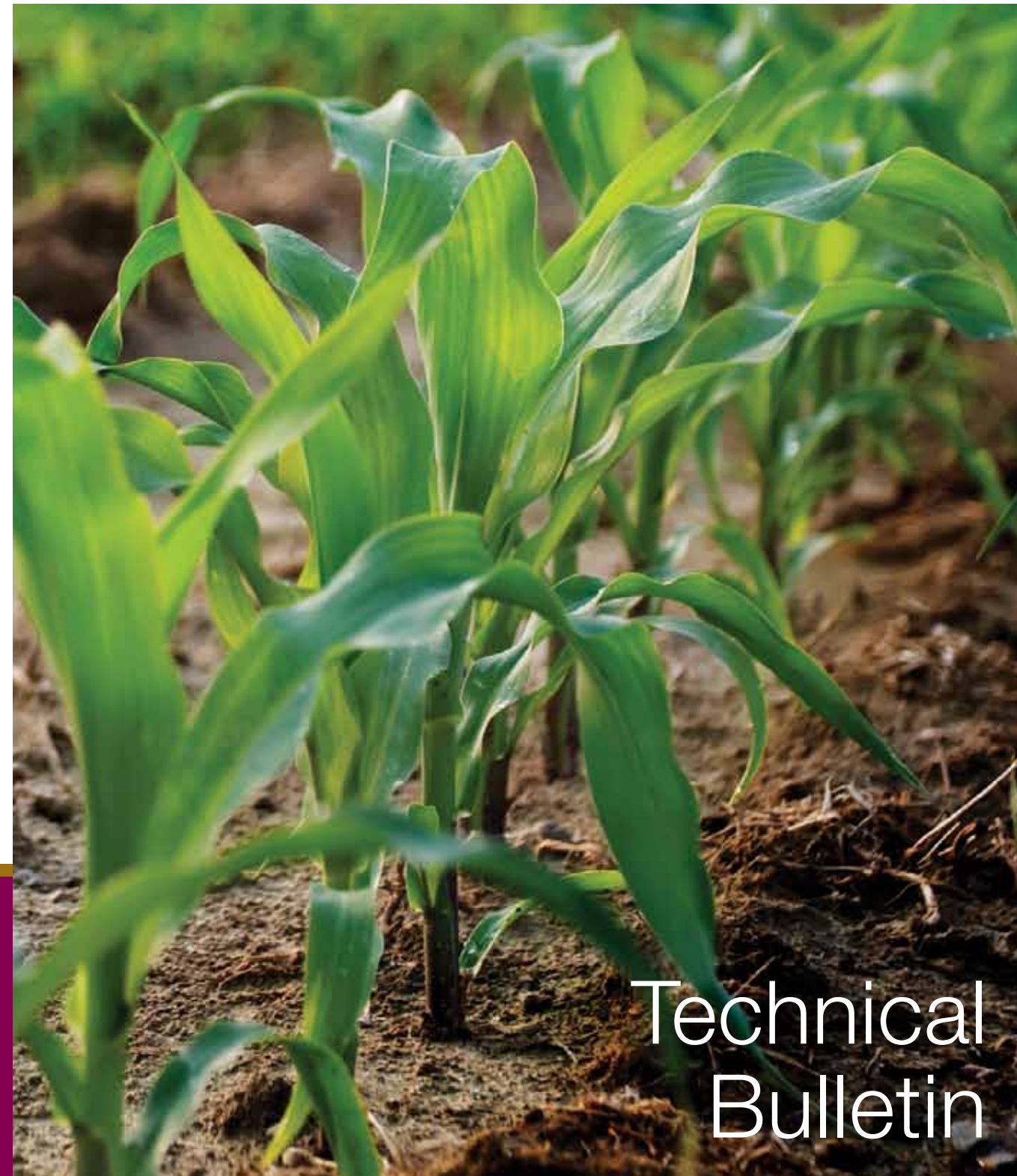


(Source: NCC)



©2010 Syngenta Crop Protection, Inc., 410 Swing Road, Greensboro, NC 27409.

Important: Always read and follow label instructions before buying and using these products. The instructions contain important conditions of sale, including limitations of warranty and remedy. Avicta Duo Corn is a Restricted Use Pesticide. For use by certified applicators only. Growers planting Avicta Duo Corn treated seed are not required to be certified applicators. Maxim Quattro is not currently registered for sale or use in all states. Please check with your state or local extension agent before buying or using this product. Avicta Complete Corn is a combination of separately registered products containing Avicta Duo Corn nematocide/insecticide and Maxim Quattro fungicide or Maxim XL and Dynasty fungicides and may additionally contain Apron XL fungicide and/or Cruiser seed treatment insecticide. Avicta[®] technology is protected by U.S. Patent No. 6,875,727. Cruiser Extreme 250 and Cruiser Extreme 1250 are seed company-applied combinations of four separately registered active ingredients that respectively deliver 0.25 and 1.25 mg ai/seed of Cruiser (thiamethoxam) plus three fungicides: Apron XL, Maxim XL and Dynasty. Apron XL[®], Avicta[®], Cruiser[®], Cruiser Extreme[®], Dynasty[®], Maxim[®], Beyond Seed Protection[™], Seedcare[™] and the Syngenta logo are trademarks of a Syngenta Group Company.



Nematode, Insect and Disease Protection for Corn

Avicta® Complete Corn is a nematicide/insecticide/fungicide seed treatment combination of separately registered products that teams Avicta seed treatment nematicide with Cruiser® seed treatment insecticide and Apron XL®, Maxim® XL and Dynasty® seed treatment fungicides or Maxim Quattro seed treatment fungicide premix. Maxim Quattro combines the market-leading active ingredients mefenoxam (Apron XL), fludioxonil (Maxim XL) and azoxystrobin (Dynasty) with thiabendazole, an active ingredient never before registered for seed treatment. Avicta Complete Corn offers corn growers the only triple protection against nematodes, early-season insects and diseases.

What are Nematodes?

Nematodes are microscopic, thread-like roundworms that inhabit the soil and feed on root systems of crops. There are more than 4,000 known plant parasitic nematode species. The plant parasitic nematodes are tiny (barely more than a millimeter long) and translucent, and therefore often invisible to the naked eye.

Plant parasitic nematodes are obligate parasites and feed using a stylet. An obligate parasite is an organism that requires a susceptible host on which to feed and to finish its life cycle. Some have broad host ranges, while others only infect a few host species.

There are three categories of nematodes that are classified based on habitat. Endoparasitic nematodes completely enter the host to feed from within. Semi-endoparasitic nematodes partially enter the root to feed, while also feeding from the outside. Ectoparasitic nematodes feed from the outside.

Nematode Damage

Corn nematodes occur in every soil type, not just sandy soils. Symptoms can include chlorosis, stunting, root damage, root galling and yield loss. Due to the difficulty involved in precisely identifying nematodes, nematode injury in corn fields is often misdiagnosed as herbicide injury, disease, micronutrient deficiencies or the result of harsh environmental conditions such as drought. In many cases, no visual symptoms are seen, but yield is impacted. While some species of nematodes may not cause economic injury on their own, they can interact with other problems, such as fungal pathogens and insects, to intensify corn yield loss.



Contemporary Production Practices Create Environment Conducive to Nematodes

Changing production practices may be escalating corn nematode populations and increasing their threat to corn production in many areas. Nematodes are sensitive to soil disturbance; therefore minimum and no-tillage farming operations have created a hospitable environment for nematodes to thrive year-after-year. Continuous corn or corn on corn rotations also favor the buildup of nematode populations.

In addition, soil-applied organophosphate and carbamate insecticides used in the past have provided some suppression of nematodes, minimizing nematode populations to the point that damage went unnoticed when these materials were used for insect protection. However, the switch to pyrethroid insecticides and the introduction of transgenic insect-resistant corn has left the door open for nematodes to prosper.

Treatment Options

Avicta Complete Corn offers corn growers a convenient seed-delivered technology designed to effectively protect corn seedlings against damaging early-season pests including nematodes, insects and diseases. Syngenta Seedcare was the first to market in corn with a seed treatment nematicide. There are currently few corn nematode control options on the market, none of which offer the convenience of a seed treatment. The components of Avicta Complete Corn work together to offer greater protection against the early-season threat of nematodes, insects and diseases in an effective, easy-to-use seed treatment to help each seed reach its full genetic yield potential.

Nematodes

An Avicta brand nematicide, the nematicide component of Avicta Complete Corn, provides effective nematode protection from day one, promoting stronger stands and emergence, and building the foundation for better yields. Nematodes have been found in every major corn-growing county in the Midwest and Southern United States. Avicta Complete Corn helps protect corn seeds against major early-season nematode species including:

- ▶ Root-knot
- ▶ Stunt
- ▶ Sting
- ▶ Lance
- ▶ Stubby-root
- ▶ Lesion
- ▶ Dagger
- ▶ Needle
- ▶ Ring
- ▶ Spiral

Insects

Avicta Complete Corn contains Cruiser seed treatment insecticide which offers better activity and longer residual for more effective and consistent early-season insect protection. Cruiser helps get crops off to a healthy start and plays a critical role in establishing a strong early-season stand. Avicta Complete Corn protects corn plants from a broad spectrum of troublesome insect pests, including:

- ▶ Wireworm
- ▶ Chinch bug
- ▶ Seedcorn maggot
- ▶ Southern corn leaf beetle
- ▶ Corn flea beetle
- ▶ White grub*
- ▶ Black cutworm
- ▶ Thrips
- ▶ Grape colaspis
- ▶ Southern green stinkbug
- ▶ Seedcorn beetle
- ▶ Corn leaf aphid
- ▶ Sugarcane beetle
- ▶ Billbug**
- ▶ Corn Rootworm**

* Including Japanese beetle larvae, European Chafer larvae, true white grub, annual white grub and May/June beetle larvae.

** Requires the higher application rate of Cruiser (1.25 mg ai/seed). Corn rootworm protection includes Mexican, Northern, Southern and Western varieties.

Diseases

Avicta Complete Corn is available with either the proven disease protection of Maxim XL, Apron XL and Dynasty, the current standard in fungicide seed treatments, or the newest and most robust seed treatment fungicide premix on the market – Maxim Quattro. Maxim Quattro combines the market-leading active ingredients mefenoxam (Apron XL), fludioxonil (Maxim XL) and azoxystrobin (Dynasty) with thiabendazole, an active ingredient never before registered for seed treatment use that offers best-in-class protection against *Fusarium*, including *Fusarium verticillioides*. Avicta Complete Corn protects against the following seed- and soil-borne disease pathogens to help shield the plant against reduced emergence which can cause slow growth and damping off of the seedlings, reduced stand, vigor and ultimately yield.

Seed-Borne

- ▶ *Fusarium*
- ▶ *Cladosporium*
- ▶ *Helminthosporium*
- ▶ *Diplodia (Stenocarpella)*
- ▶ *Aspergillus*
- ▶ *Penicillium*
- ▶ *Sporisorium (Sphacelotheca)*

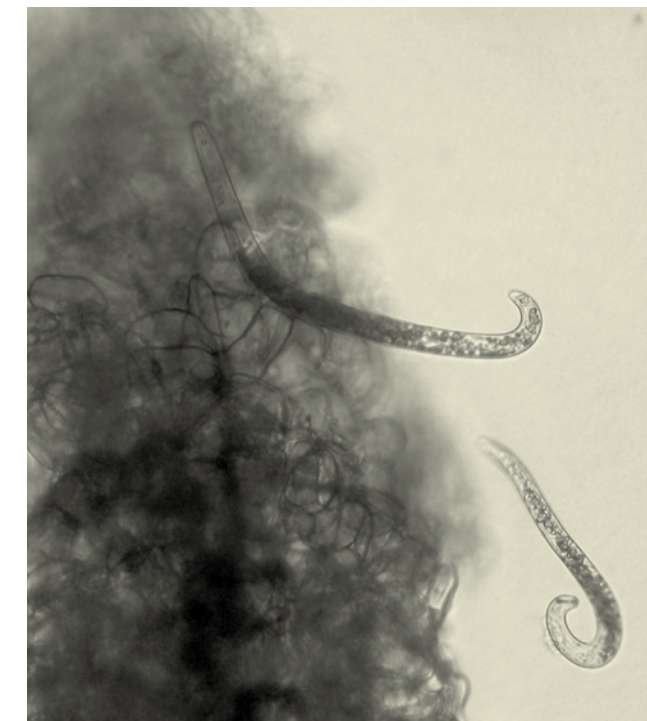
Soil-Borne

- ▶ *Rhizoctonia*
- ▶ *Pythium*
- ▶ *Fusarium*
 - *Fusarium graminearum*
 - *Fusarium verticillioides****

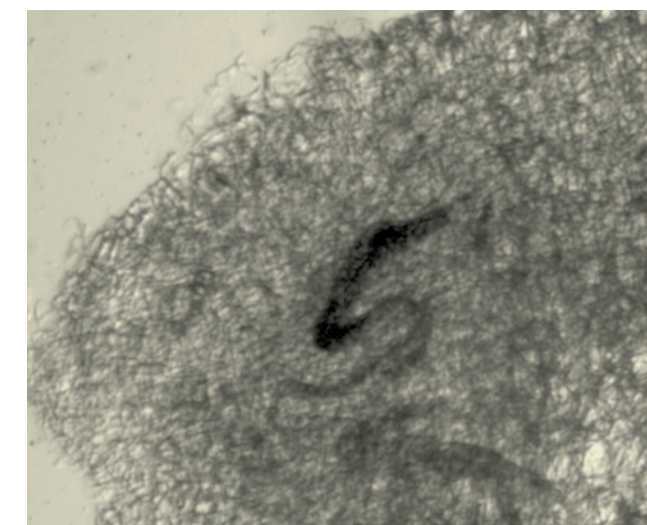
***Protection against *Fusarium verticillioides* occurs only with the use of Maxim Quattro.



Lesion Nematode



Lesion Nematodes



Root-knot Nematodes in Gall Tip